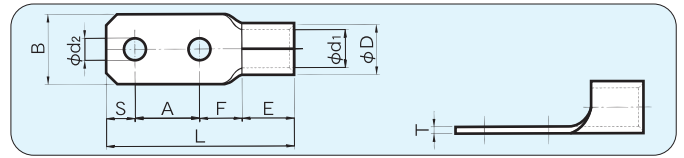


銅線用裸圧着端子 角形ニツ穴端子 (角形)

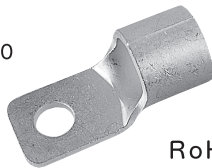


RoHS 指令対応品

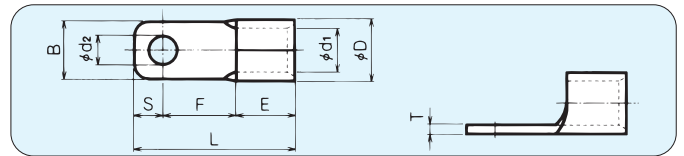


| 曲げ | 呼 び | 各 部 の 寸 法 | | | | | | | | | | 適合電線範囲 | | 適合工具 | 一箱入数 |
|----|----------|-----------------|------|------|-------|------|------|------|------|-----------------|-----|-------------------|----------------|--|----------------|
| | | φd ₂ | A | B | L | F | S | E | φD | φd ₁ | T | 撚線mm ² | AWG | | |
| | 5.5-D-5 | 5.3 | 12.0 | 10.0 | 34.0 | 10.7 | 5.0 | 6.3 | 5.6 | 3.4 | 1.0 | 2.63~6.64 | 12-10 | *DS-H18, *DS-H214, *DS-1B, *DS-A5 *DS-E14, PALM-125A | 400(100×4) |
| | 8-D-5 | 5.3 | 12.0 | 15.0 | 38.0 | 11.7 | 6.0 | 8.3 | 7.1 | 4.5 | 1.2 | 6.64~10.52 | 8 | *DS-H18, *DS-H214, *DS-E14 | 200 (100×2) |
| | 8-D-6 | 6.4 | 12.0 | 15.0 | 38.0 | 11.7 | 6.0 | 8.3 | 7.1 | 4.5 | 1.2 | | | | |
| | 14-D-5 | 5.3 | 16.0 | 15.0 | 46.0 | 13.0 | 7.0 | 10.0 | 9.0 | 5.8 | 1.6 | 10.52~16.78 | 6 | *DS-H214, *DS-HO60, *DS-HO150 *DS-E14, *DS-E60, *DS-E150 *DS-E200M, *DS-E250M, EP-150HL | 100 |
| | 14-D-6 | 6.4 | 16.0 | 15.0 | 46.0 | 13.0 | 7.0 | 10.0 | 9.0 | 5.8 | 1.6 | | | | |
| | 22-D-5 | 5.3 | 16.0 | 15.0 | 48.5 | 14.1 | 7.0 | 11.4 | 11.5 | 7.7 | 1.8 | 16.78~26.66 | 4 | *DS-HO60, *DS-HO150, *DS-E60 *DS-E150, *DS-E200M, *DS-E250M REC-Li325, EP-150HL | 100 |
| | 22-D-6 | 6.4 | 16.0 | 15.0 | 48.5 | 14.1 | 7.0 | 11.4 | 11.5 | 7.7 | 1.8 | | | | |
| | 38-D-5 | 5.3 | 16.0 | 18.0 | 50.0 | 14.0 | 7.0 | 13.0 | 13.3 | 9.4 | 1.8 | 26.66~42.42 | 2 | *DS-HO60, *DS-HO150, *DS-E60 *DS-E150, *DS-E200M, *DS-E250M REC-Li325, EP-150HL | 50 |
| | 38-D-6 | 6.4 | 16.0 | 18.0 | 50.0 | 14.0 | 7.0 | 13.0 | 13.3 | 9.4 | 1.8 | | | | |
| | 60-D-12 | 13.0 | 40.0 | 22.0 | 88.5 | 15.5 | 15.0 | 18.0 | 15.6 | 11.4 | 2.0 | 42.42~60.57 | 1/0 | *DS-HO60, *DS-HO150, 12号H, *12号A, *DS-E60 *DS-E150, *DS-E200M, *DS-E250M, REC-Li325, EP-150HL | 40 |
| | 100-D-10 | 10.5 | 32.0 | 28.5 | 86.0 | 20.0 | 15.0 | 19.0 | 22.3 | 16.4 | 2.6 | 96.3~117.2 | 4/0 | *DS-HO150, 12号H, *12号A | 20 |
| | 100-D-12 | 14.0 | 40.0 | 28.5 | 93.0 | 19.0 | 15.0 | 19.0 | 22.3 | 16.4 | 2.6 | 96.3~117.2 | 4/0 | *DS-E150, *DS-E200M | 20 |
| ● | 150-D-12 | 14.0 | 40.0 | 36.0 | 106.0 | 21.0 | 18.0 | 27.0 | 26.5 | 19.5 | 3.2 | 117.2~152.05 | 250-300 MCM | *DS-E250M, REC-Li325, EP-150HL | 12 |
| ● | 200-D-12 | 14.0 | 40.0 | 44.0 | 117.0 | 26.5 | 18.0 | 32.5 | 32.7 | 24.0 | 4.0 | 192.6~242.27 | 400 MCM | 12号H, 12号A, DS-E200M, DS-E250M REC-Li325 | 8 |
| ● | 325-D-12 | 14.0 | 40.0 | 50.5 | 124.0 | 29.0 | 18.5 | 36.5 | 37.6 | 28.0 | 4.5 | 242.27~325.0 | 500-600 MCM | 12号H, 12号A, REC-Li325 | 4 |

銅線用裸圧着端子 ブレーカー用端子 (CB形)



RoHS 指令対応品



| 規格 | 曲げ | 呼 び | 各 部 の 寸 法 | | | | | | | | | | 適合電線範囲 | | 適合工具 | 一箱入数 |
|----|----|-----|-----------------|------|------|------|------|-------------------|------|-----------------|------|-------------------|-----------------|---|--|------|
| | | | φd ₂ | B | L | F | S | E | φD | φd ₁ | T | 撚線mm ² | AWG | | | |
| UL | SP | ▲ | CB22-5 | 5.3 | 12.4 | 32.3 | 14.7 | 6.2 | 11.4 | 11.5 | 7.7 | 1.8 | 16.78 26.66 | 4 | *DS-HO60 *DS-HO150 *DS-E60 *DS-E150 | 100 |
| UL | SP | ▲ | CB22-6 | 6.4 | | | | | | | | | | | | |
| UL | SP | | CB22-8 | 8.4 | | | | | | | | | | | | |
| UL | SP | ● | CB38-5 | 5.3 | 13.4 | 36.7 | 17.0 | 6.7 5.5 6.7 | 13.0 | 13.3 | 9.4 | 1.8 | 26.66 42.42 | 2 | *DS-E200M *DS-E250M REC-Li325 EP-150HL | 100 |
| UL | SP | ● | CB38-6N | 6.4 | | | | | | | | | | | | |
| UL | SP | ● | CB38-6 | 6.4 | | | | | | | | | | | | |
| UL | SP | ● | CB38-8 | 8.4 | 13.4 | 36.7 | 6.7 | 13.0 | 13.3 | 9.4 | 1.8 | 26.66 42.42 | 2 | *DS-E200M *DS-E250M REC-Li325 EP-150HL | 100 | |
| UL | SP | ● | CB60-6 | 6.4 | 16.0 | 49.0 | 23.0 | 8.0 | 18.0 | 15.5 | 11.4 | 2.0 | 42.42 60.57 | 1/0 | *DS-HO60, *DS-HO150 12号H, *12号A *DS-E60, *DS-E150 *DS-E200M, *DS-E250M REC-Li325, EP-150HL | 50 |
| UL | SP | ● | CB60-8 | 8.4 | | | | | | | | | | | | |
| UL | SP | ● | CB60-10 | 10.5 | | | | | | | | | | | | |
| UL | SP | ● | CB80-8 | 8.4 | 22.0 | 51.0 | 21.0 | 11.0 | 19.0 | 19.5 | 14.5 | 2.3 | 76.28 96.3 | 3/0 | *DS-HO150 12号H | 25 |
| UL | SP | ● | CB80-10 | 10.5 | | | | | | | | | | | | |
| UL | SP | ● | CB80-12 | 13.0 | | | | | | | | | | | | |
| UL | SP | ● | CB100-8 | 8.4 | 22.0 | 53.0 | 23.0 | 11.0 | 19.0 | 22.3 | 16.4 | 2.6 | 96.3 117.2 | 4/0 | *12号A *DS-E150 *DS-E200M | 25 |
| UL | SP | ● | CB100-10 | 10.5 | | | | | | | | | | | | |
| UL | SP | ● | CB100-12 | 13.0 | | | | | | | | | | | | |
| UL | SP | ● | CB150-8 | 8.4 | 22.0 | 61.0 | 23.0 | 11.0 | 27.0 | 26.5 | 19.5 | 3.2 | 117.2 152.05 | 250 300 MCM | *DS-E250M REC-Li325 EP-150HL | 15 |
| UL | SP | ● | CB150-S10 | 10.5 | | | | | | | | | | | | |
| UL | SP | ● | CB150-10 | 10.5 | | | | | | | | | | | | |
| UL | SP | ● | CB150-12 | 13.0 | 25.0 | 61.5 | 22.0 | 12.5 | 27.0 | 26.5 | 19.5 | 3.2 | 152.05 | 300-350M CM | 12号H *12号A *DS-E200M *DS-E250M REC-Li325 | 10 |
| UL | SP | ● | CB180-10 | 10.5 | 28.0 | 65.0 | 22.0 | 14.0 | 29.0 | 28.5 | 21.0 | 3.5 | 152.05 192.6 | 400 MCM | 12号H *12号A *DS-E200M *DS-E250M REC-Li325 | 8 |
| UL | SP | ● | CB180-12 | 13.0 | | | | | | | | | | | | |
| UL | SP | ● | CB200-10 | 10.5 | 36.0 | 73.3 | 22.8 | 18.0 | 32.5 | 32.7 | 24.0 | 4.0 | 192.6 242.27 | 400 MCM | 12号H *12号A *DS-E200M *DS-E250M REC-Li325 | 8 |
| UL | SP | ● | CB200-12 | 13.0 | | | | | | | | | | | | |
| UL | SP | ● | CB325-S10 | 10.5 | 38.5 | 85.5 | 32.0 | 17.0 | 36.5 | 37.6 | 28.0 | 4.5 | 242.27 325.0 | 500-600M CM | 12号H *12号A REC-Li325 | 6 |
| UL | SP | ● | CB325-10 | | | | | | | | | | | | | |
| UL | SP | ● | CB325-S12 | 13.0 | 38.5 | 85.5 | 32.0 | 17.0 | 36.5 | 37.6 | 28.0 | 4.5 | 242.27 325.0 | 500-600M CM | 12号H *12号A REC-Li325 | 6 |
| UL | SP | ● | CB325-12 | | | | | | | | | | | | | |

- 各呼びの印は、UL登録品、CSA登録品です。
- CSA登録品としてご使用の際は、注文時にご指示ください。カートンがCSA品用となります。
- 各呼びの◎印は、日本電機工業会規格の準拠品です。
- 上記寸法表にかぎらず特注品もご相談ください。
- 上記の端子は、ブレーカー専用にて製作したものです。ブレーカー以外に使用しないでください。
- *印はUL適合工具です。
- ・▲印は舌部曲げ加工対象品です。
- ▲印はご注文前に弊社または弊社営業所まで必ずお問合せ下さい。(注)曲げ加工品は各規格に適合していません。曲げ加工品の各寸法は曲げる角度により、異なります。